



Innovative and Easy

Fresh indoor air with the **VILPE® WIVE** intake vent

- Draft-free design
- No additional maintenance required
- Filters contaminants from the air
- Fast and easy filter change
- Easy installation
- Available with or without thermostat
- Can be painted or wallpapered
- Silencer sold separately
- Models available for walls or window vents



10 year
warranty



Wive



The wallpaper in the pictures is Nocturne 6331 from Boråstapeter, and the colour of the paint is V490 from Tikkurila.

BORÅSTAPETER

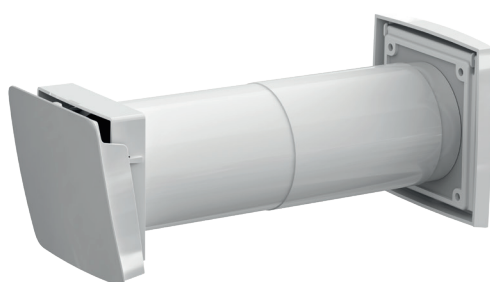
> [VILPE.COM/WIVE](https://vilpe.com/wive)

All VILPE Wive 100 products are designed and manufactured in Finland.

 **TIKKURILA**

VILPE Wive 100 intake vent set + thermostat

Product no.
380000



- For passive ventilation

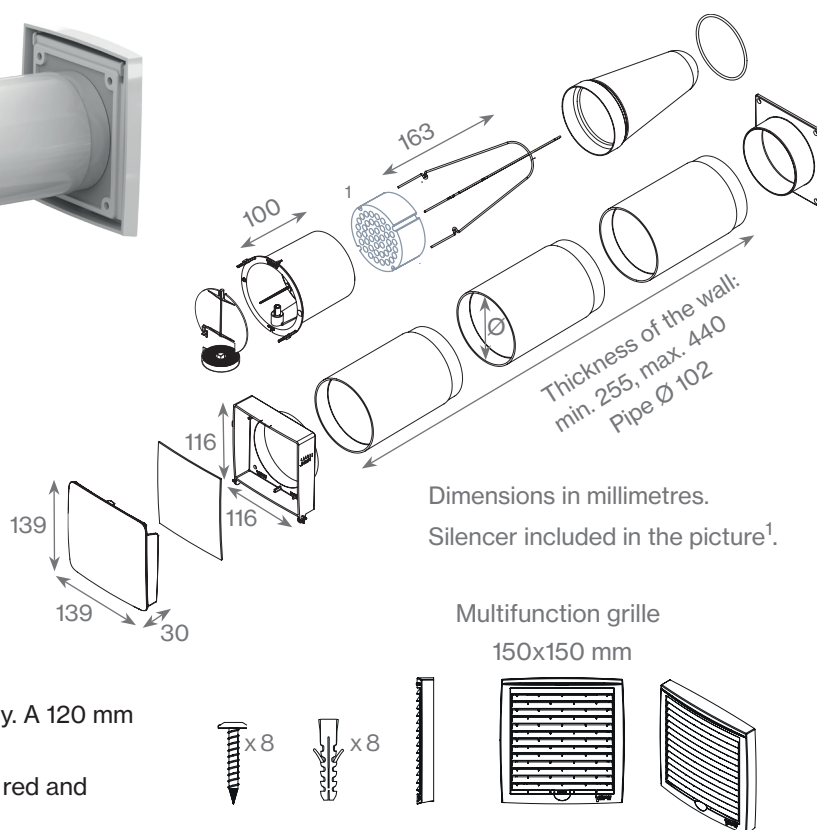
Package includes

- VILPE Wive 100 intake vent set
- High quality M5 class filter (1 pcs)
- Thermostat
- All necessary screws and plugs
- White VILPE Multifunction grille 150x150 mm

Additional parts

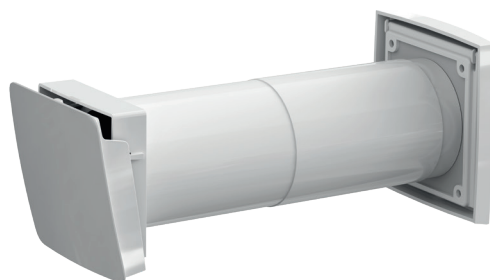
Silencer and replacement filters sold separately. A 120 mm extension pipe is also available.

Multifunction grilles in light or dark grey, black, red and beige are sold separately.



VILPE Wive 100 intake vent set

Product no.
380010



- Specifically for mechanical ventilation

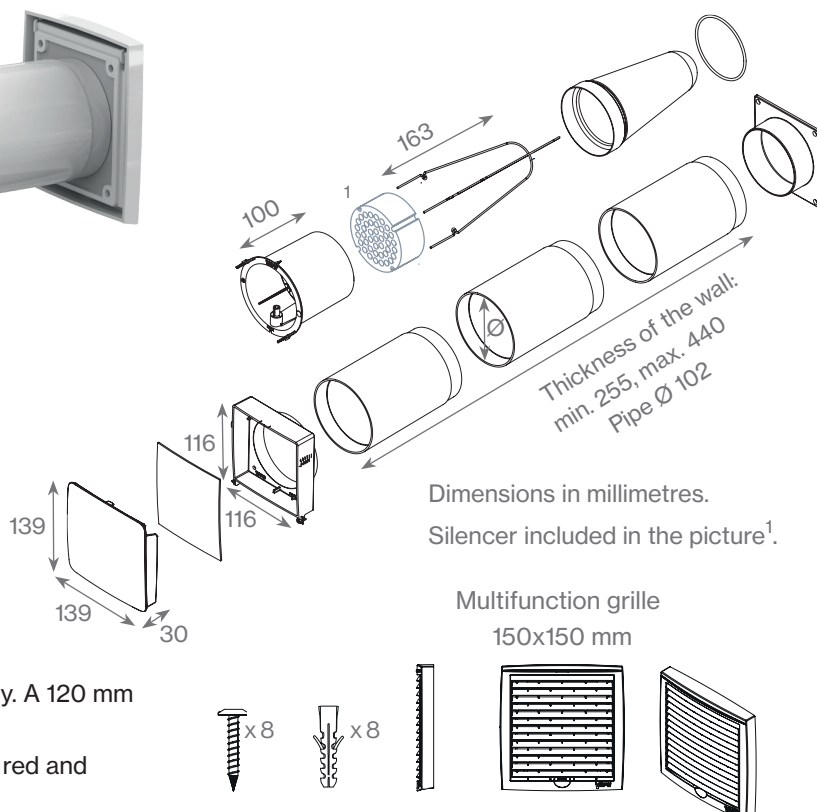
Package includes

- VILPE Wive 100 intake vent set
- High quality M5 class filter (1 pcs)
- All necessary screws and plugs
- White VILPE Multifunction grille 150x150 mm

Additional parts

Silencer and replacement filters sold separately. A 120 mm extension pipe is also available.

Multifunction grilles in light or dark grey, black, red and beige are sold separately.



VILPE Wive 100 intake for window vent + thermostat

Product no.
380070



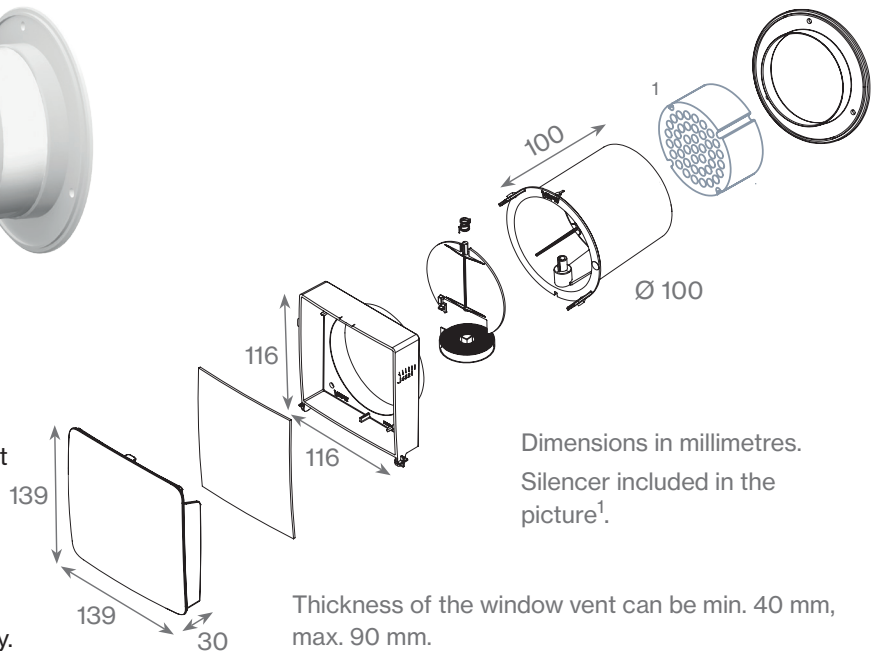
- For passive ventilation

Package includes

- VILPE Wive 100 intake for window vent
- Thermostat
- All necessary screws and plugs

Additional parts

Silencer and coarse filter sold separately.



10 year warranty for all VILPE Wive 100 intake vents and fitting plates

VILPE Wive 100 intake for window vent

Product no.
380080



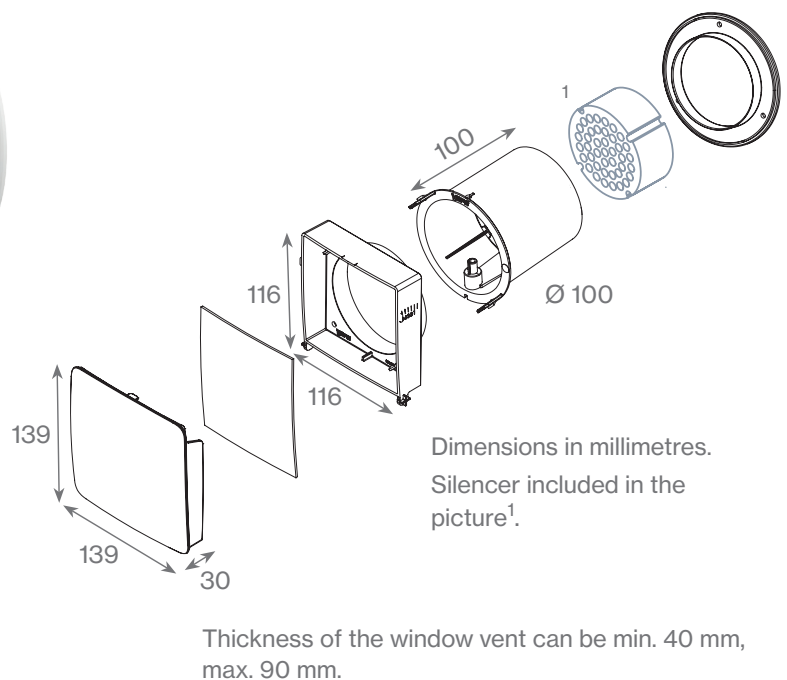
- Specifically for mechanical ventilation

Package includes

- VILPE Wive 100 intake for window vent
- All necessary screws and plugs

Additional parts

Silencer and coarse filter sold separately.



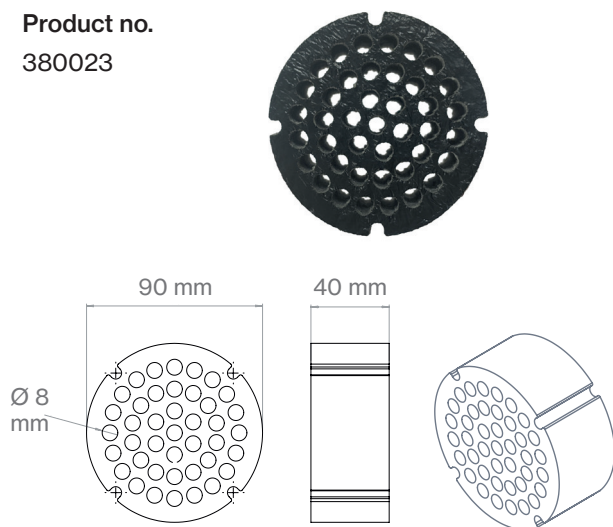
More information, retailers, installation videos:

> [VILPE.COM/WIVE](https://vilpe.com/wive)

Wive

VILPE Wive 100 silencer

Product no.
380023



Package includes

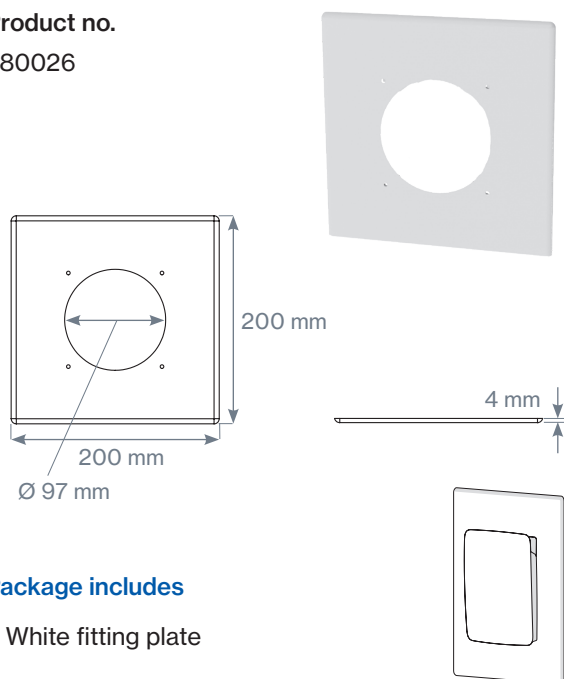
- Silencer

Suitability

Suitable as an addition to the VILPE Wive 100 intake vent set and the VILPE Wive 100 intake vent set + thermostat.

VILPE Wive 100 fitting plate 200x200

Product no.
380026



Package includes

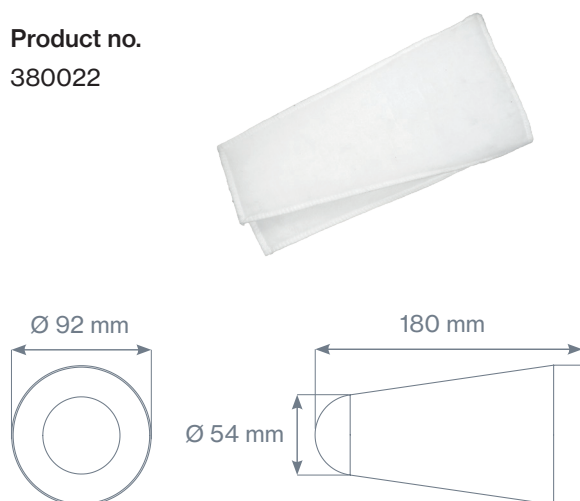
- White fitting plate

Suitability

Suitable as an addition to all VILPE Wive 100 intake vents and window vents.

VILPE Wive 100 filter (5 pcs)

Product no.
380022



Package includes

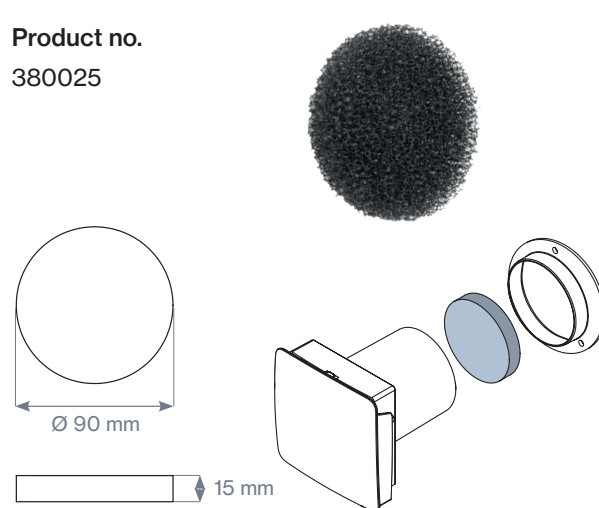
- 5 pcs high quality M5 class filter

Suitability

Suitable as an addition to the VILPE Wive 100 intake vent set and the VILPE Wive 100 intake vent set + thermostat.

VILPE Wive 100 coarse filter (5 pcs)

Product no.
380025



Package includes

- 5 pcs coarse filter, class G1

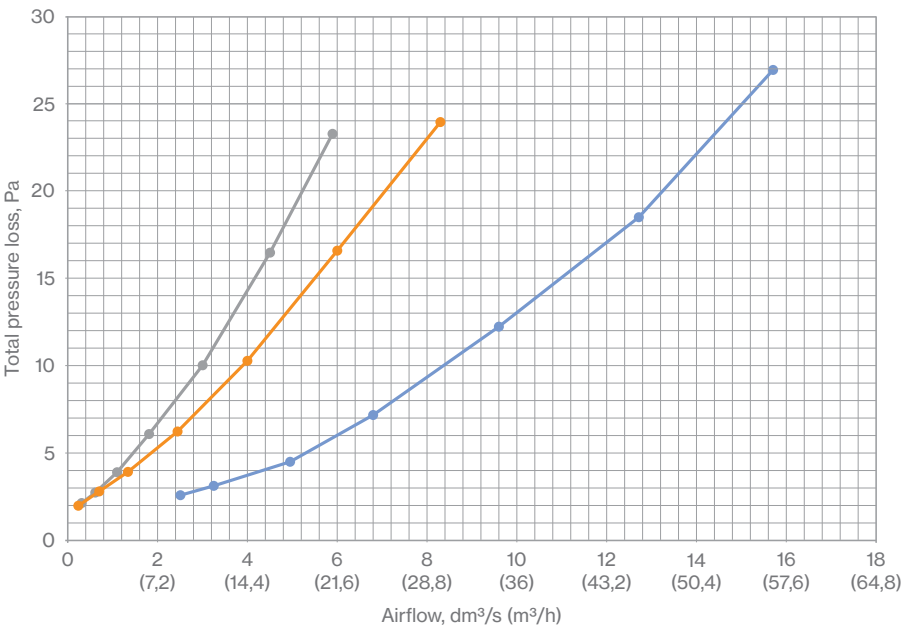
Suitability

Suitable as an addition to the VILPE Wive 100 intake for window vent and the VILPE Wive 100 intake for window vent + thermostat.

Airflow performance

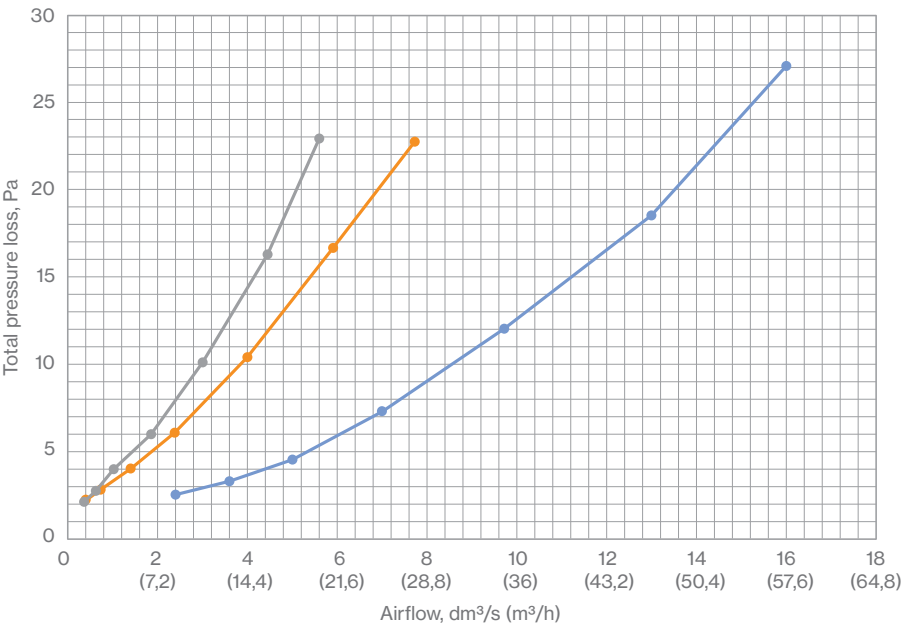
The airflow performance of the VILPE Wive 100 intake vent set and the VILPE Wive 100 intake vent set + thermostat (when the vent covers are open at the largest ventilation aperture (5) and the multifunction grilles are installed).

VILPE Wive 100 intake vent set + thermostat



EN 13141-1:2004
ISO 5167-1:2003
ISO 5167-2:2003

VILPE Wive 100 intake vent set



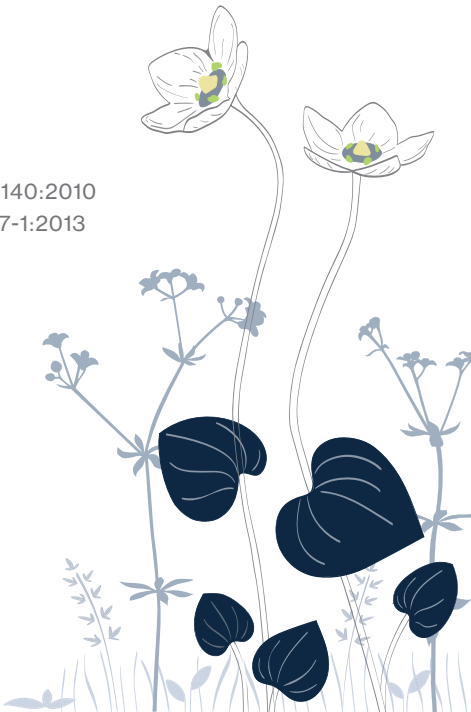
EN 13141-1:2004
ISO 5167-1:2003
ISO 5167-2:2003

VILPE Wive 100 sound insulation

Product type	D _{n,e,w} dB	D _{n,e,w} + C _* dB	D _{n,e,w} + C _{*,*} dB
Wive 100 + thermostat	35	34	33
Wive 100 + thermostat + silencer	37	37	36
Wive 100 + thermostat + silencer; closed	45	44	43
Intact test wall 300mm (2x plasterboard / wool / 2x plasterboard)	68	67	63

ISO 10140:2010
ISO 717-1:2013

D_{n,e,w} air intake vent weighted element-normalized sound level difference, dB.
* Weighted element-normalized sound level difference D_{n,e,w} + C can be used, for example, when evaluating sound insulation for jet aircraft noise in the vicinity of airports.
** The weighted element-normalized level difference D_{n,e,w} + C_{tr} can be used, for example, when evaluating sound insulation for city traffic.



Draft-free design

The VILPE Wive intake vent brings fresh outdoor air into the building. The vent is designed to prevent uncomfortable drafts as the air flow is directed upwards, where the fresh outside air mixes with the warm indoor air. This keeps the room temperature at an ideal level without the sense of a draft. The intake vent's cover is also insulated to prevent condensation.

Use & installation

The VILPE Wive intake vent is suitable for both new buildings and renovation projects. It can be used in detached houses, multi-apartment buildings and row houses. The intake vent can be installed in a wall or as a window vent. The VILPE Wive vent can also replace an old air intake vent or be installed as a completely new air intake route. Installing the VILPE Wive is quick and easy, as no coupling or wiring is necessary. The VILPE Wive is also available with or without a thermostat.

- The VILPE Wive intake vent with thermostat should only be used in buildings with passive ventilation. The thermostat adjusts automatically to the outdoor temperature, and therefore does not need to be manually regulated/maintained. The flap of the vent reacts to the outdoor temperature, so that at -5 °C the flap closes, leaving just a small opening for the outdoor air. The valve is completely open when the outdoor temperature reaches +20 °C. If necessary, the vent can also be closed completely.
- The VILPE Wive intake vent without thermostat should be used in buildings with mechanical ventilation.

10 year warranty

All VILPE Wive 100 intake vents and fitting plates have a 10 year warranty. This warranty does not cover silencers or filters.

Modifiable appearance

The appearance of the white intake vent can be easily modified to fit the style of the project and the customer. The VILPE Wive can also be wallpapered or painted to match the interior of a room, or left as it is - the result is stylish either way.



Additional parts

The high-quality filter of the VILPE WIVE 100 intake vents effectively prevents contaminants like dust and pollen from entering the building. Changing the filter is quick and easy, as no tools are necessary. Other maintenance is not required. A silencer can be purchased separately.

A coarse filter is also available for the VILPE Wive 100 intake for window vent.

The VILPE Wive series' fitting plate suits all Wive intake vents. The fitting plate should be used when the hole of the old vent is too large for the VILPE Wive vent. The fitting plate covers the hole and the Wive can then be installed onto the plate.

The VILPE Wive intake vents with thermostats should only be used in buildings with passive ventilation – for example, during ventilation system renovations. If the building is ventilated mechanically, Wive intake vents without thermostats should be used instead.

Product numbers

Products	Product no.
VILPE Wive 100 intake vent set + thermostat	380000
VILPE Wive 100 intake vent set	380010
VILPE Wive 100 intake for window vent + thermostat	380070
VILPE Wive 100 intake for window vent	380080
VILPE Wive 100 intake vent silencer	380023
VILPE Wive 100 intake vent filters (5 pcs)	380022
VILPE Wive 100 coarse filter (5 pcs)	380025
VILPE Wive 100 fitting plate 200x200	380026

